

CPDH Office of Health Equity
Gender Health Equity Unit

LBTQ Health Equity Initiative Townhall

October 27, 2021 | 1:00 – 3:00 PM



HOUSEKEEPING

- ☑ Closed captioning is available.
- ☑ Session is being recorded.
- ☑ Please turn off your mic to eliminate background noise. Please stay muted until you are called on to speak.
- ☑ Use Zoom's raise your hand and chat function if you have a comment or question.
- ☑ Say name and organization each time you speak.
- ☑ There will be a facilitated discussion at the end of the session.
- ☑ For technical issues, email Simran Sunak at simran.sunak@achangllc.com and Andrew Chang at andrew.chang@achangllc.com

AGENDA

1:00 – 1:15

Welcome and Housekeeping

Jason Tescher (He/His)
Chief, Gender Health Equity Unit
Office of Health Equity, Department of Public Health

1:15 – 1:30

Revised Initiative Priorities: What we heard

Sarah Roush, MSPH, CHES (She/Hers)
Gender Health Equity Specialist
Office of Health Equity, Department of Public Health

1:30 – 2:00

Solicitation Structures: What we are thinkin'

Sarah Roush, MSPH, CHES (She/Hers)

Amy Lanteigne, MSPH (She/Hers)
Gender Health Equity Specialist
Office of Health Equity, Department of Public Health

2:00 – 2:05

Break

2:05 – 2:55

Did We Get It Right: Facilitated discussion

Jhilya F. Mayas, PhD (She/Hers)

2:55 – 3:00

Next steps

Jason Tescher (He/His)

AGENDA

1:00 – 1:15

Welcome and Housekeeping

Jason Tescher (He/His)
Chief, Gender Health Equity Unit
Office of Health Equity, Department of Public Health

1:15 – 1:30

Revised Initiative Priorities: What we heard

Sarah Roush, MSPH, CHES (She/Hers)
Gender Health Equity Specialist
Office of Health Equity, Department of Public Health

1:30 – 2:00

Solicitation Structures: What we are thinkin'

Sarah Roush, MSPH, CHES (She/Hers)

Amy Lanteigne, MSPH (She/Hers)
Gender Health Equity Specialist
Office of Health Equity, Department of Public Health

2:00 – 2:05

Break

2:05 – 2:55

Did We Get It Right: Facilitated discussion

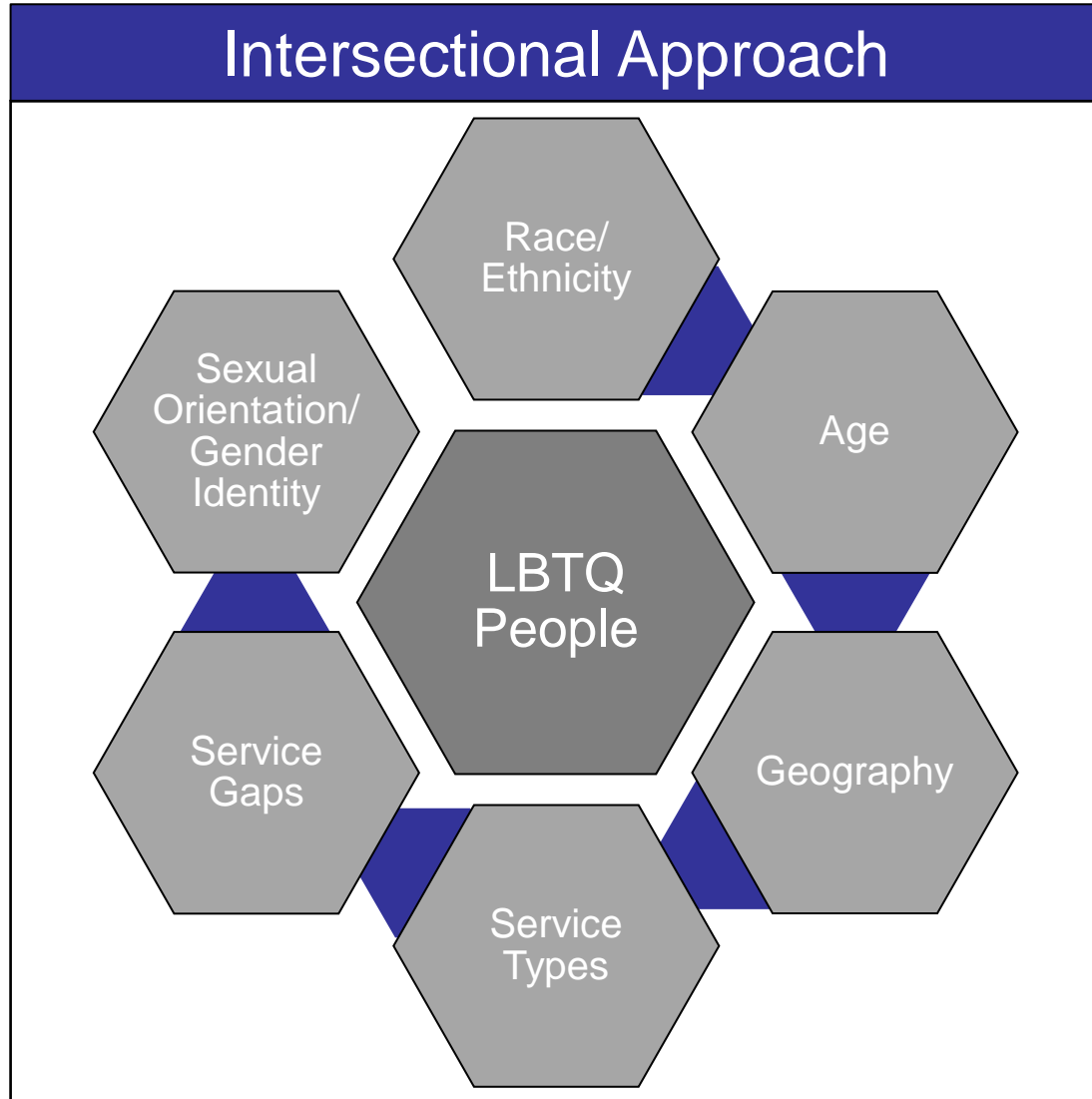
Jhilya F. Mayas, PhD (She/Hers)

2:55 – 3:00

Next steps

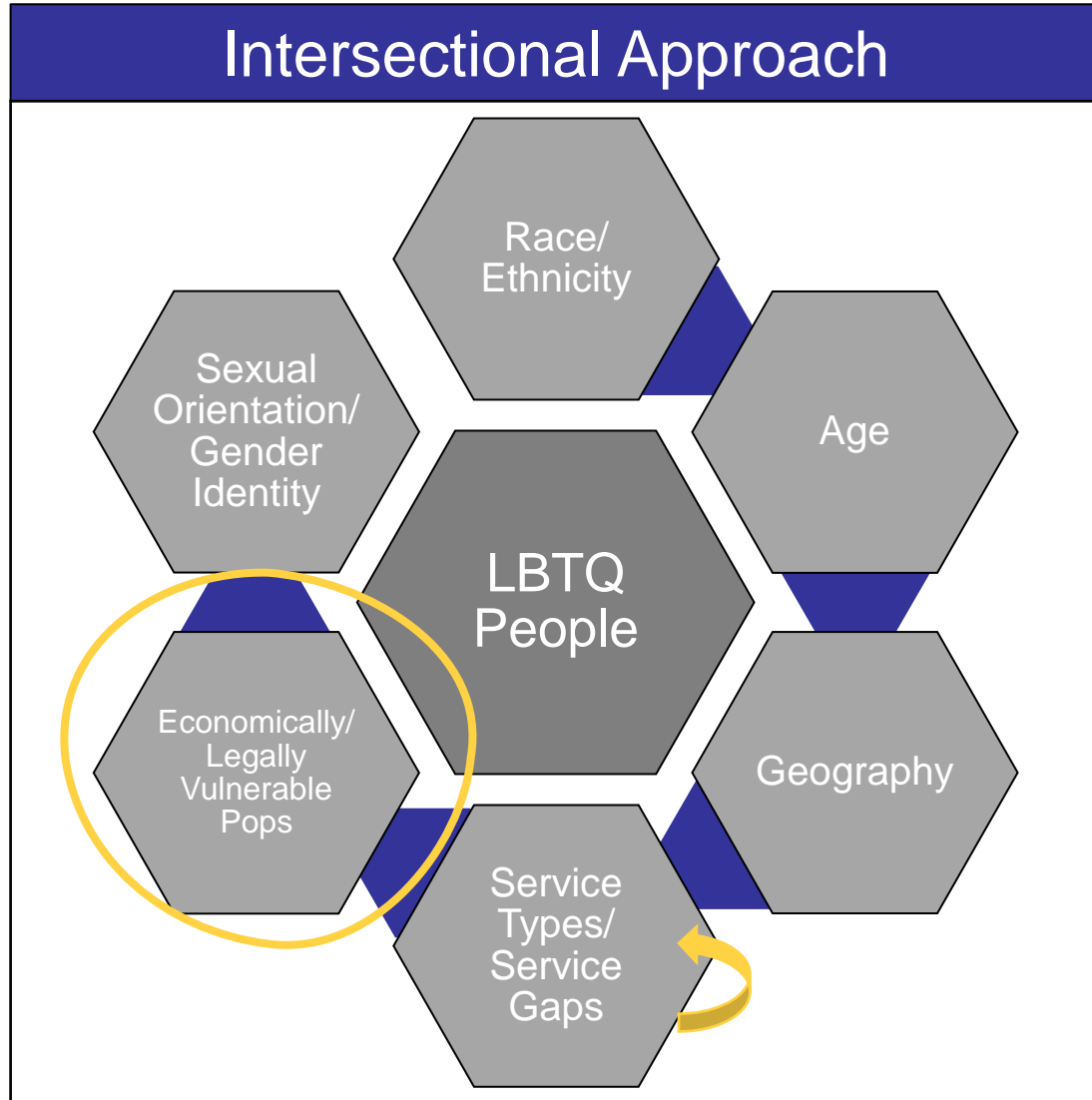
Jason Tescher (He/His)

ORIGINAL INITIATIVE PRIORITIES



- Priority Populations
- LGBTQ People of Color
 - LGBTQ Youth
 - LGBTQ Elders

EXPANDED INITIATIVE PRIORITIES



- Priority Populations
- BIPOC LGBTQ
 - LGBTQ Youth
 - LGBTQ Elders

AGENDA

1:00 – 1:15

Welcome and Housekeeping

Jason Tescher (He/His)
Chief, Gender Health Equity Unit
Office of Health Equity, Department of Public Health

1:15 – 1:30

Revised Initiative Priorities: What we heard

Sarah Roush, MSPH, CHES (She/Hers)
Gender Health Equity Specialist
Office of Health Equity, Department of Public Health

1:30 – 2:00

Funding and Solicitation Structures: What we are thinkin’

Sarah Roush, MSPH, CHES (She/Hers)

Amy Lanteigne, MSPH (She/Hers)
Gender Health Equity Specialist
Office of Health Equity, Department of Public Health

2:00 – 2:05

Break

2:05 – 2:55

Did We Get It Right: Facilitated discussion

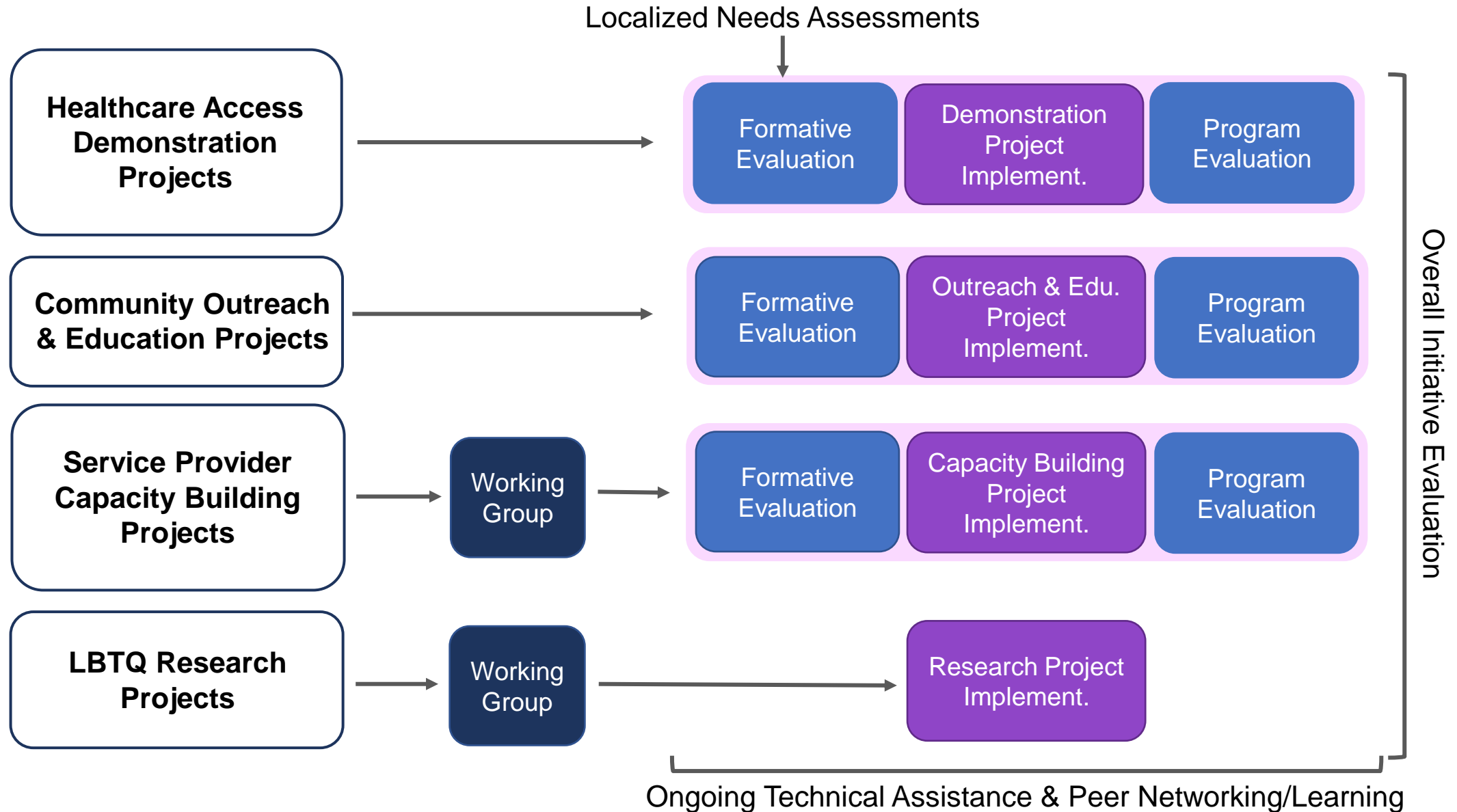
Jhilya F. Mayas, PhD (She/Hers)

2:55 – 3:00

Next steps

Jason Tescher (He/His)

INITIATIVE STRUCTURE



PROPOSED FUNDING MODEL

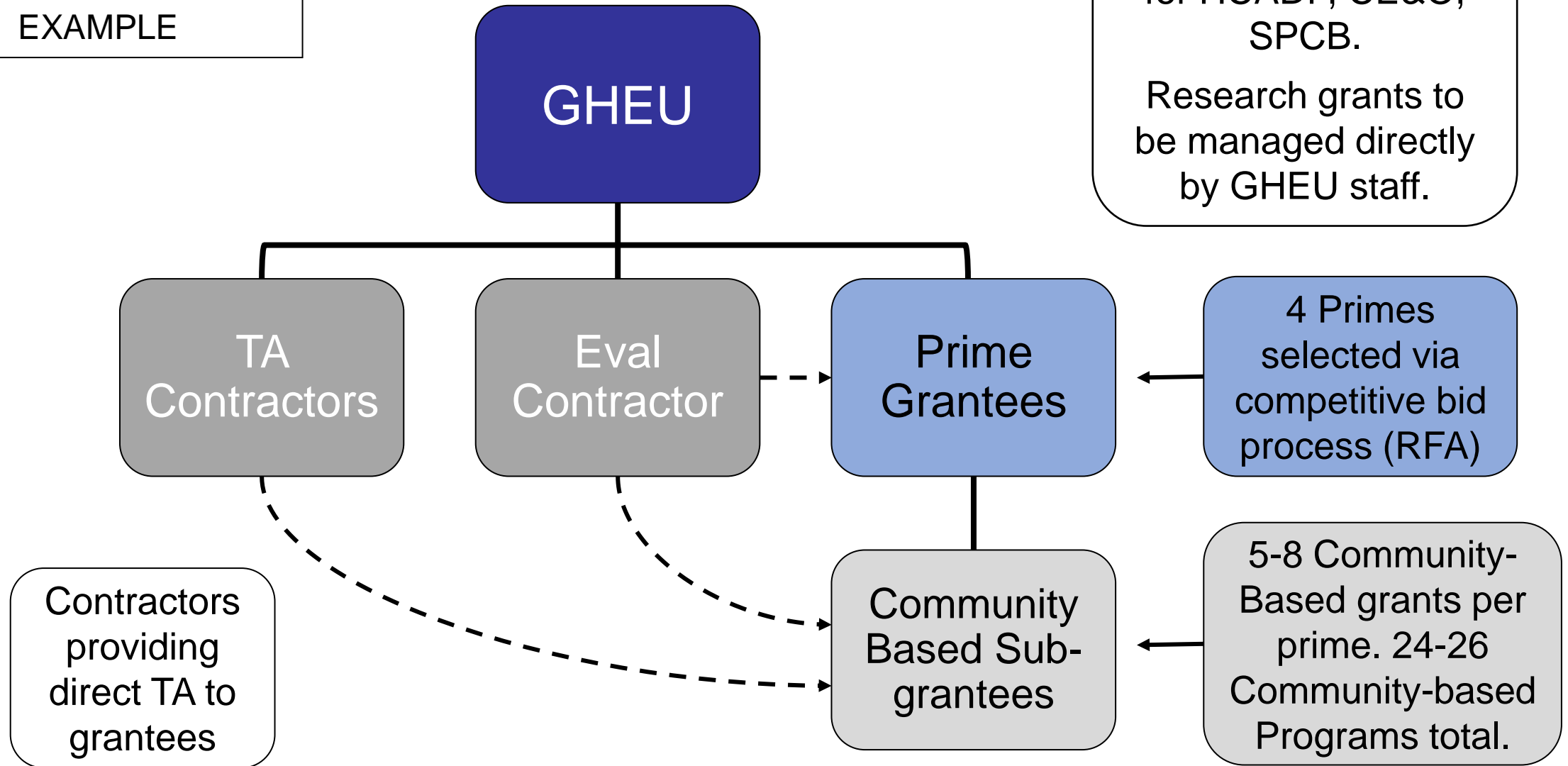
- Solicitations 1 & 2: Grant applications from LBTQ-serving 501(c)(3) organizations/foundations with portfolio of proposed community-based orgs/programs
- Benefits: ability to direct funds to organizations/groups who don't have capacity to compete for and manage government grants; experience accessing & supporting grassroots LBTQ organizations; established community-engagement processes; support in developing CBP applications; strengthening intra-community networks
- Projected total # contracts for LBTQ Initiative: 55-57
 - Prime grantees to manage 34-36
 - GHEU to directly manage 21
- Overseeing data collection & quality assurance

PROPOSED FUNDING STRUCTURE

HCADP/CE&O
EXAMPLE

Proposed structure
for HCADP, CE&O,
SPCB.

Research grants to
be managed directly
by GHEU staff.

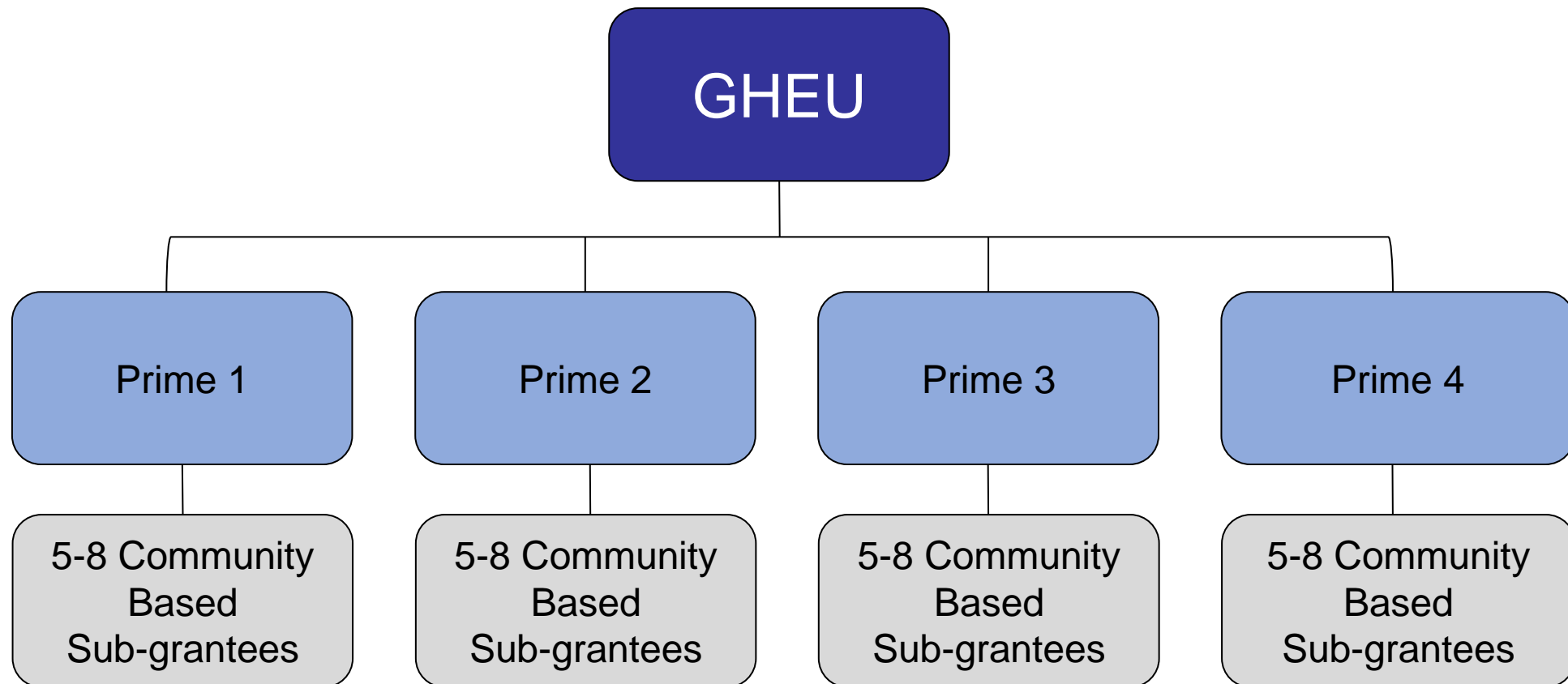


Contractors
providing
direct TA to
grantees

5-8 Community-
Based grants per
prime. 24-26
Community-based
Programs total.

DRAFT PROPOSED PRIME STRUCTURE

4 prime grantees per strategy (Example: Solicitation 1)



PRIME GRANTEES

- Competitive process: applications assessed for minimum qualifications and alignment with initiative priorities (desired qualifications)

Minimum Qualifications (Mandatory)	Desired Qualifications (Scored)
<ul style="list-style-type: none">✓ Must be 501(c)(3) organization✓ Must demonstrate record of experience in program management✓ Must demonstrate administrative and fiscal capacity to oversee sub-grantees✗ For-profit corporations/organizations✗ Government agencies or public education institutions (Solicitations 1 & 2)	<ul style="list-style-type: none">▪ Must demonstrate significant experience and cultural competence in working with LGBTQ populations and other initiative priority populations.▪ Must address process for identifying and selecting sub-grantee partners, and justify alignment of overall portfolio with initiative priorities.▪ Application and sub-grantee portfolio will be assessed for overall diversity and inclusion of priority populations.

COMMUNITY-BASED SUB-GRANTEES

Minimum Qualifications (Mandatory)

- ✓ Must be 501(c)(3) organization or be fiscally sponsored by a tax-exempt organization
- ✓ Must be based in California
- ✓ Must have Letter of Intent with Prime applicant
- ✗ For-profit corporations/organizations
- ✗ Government agencies or public education institutions (Solicitations 1 & 2)

Desired Qualifications (Scored)

- Must demonstrate significant experience and cultural competence in working with LGBTQ populations and other initiative priority populations.
- Sub-grantee programs addressing the specific health needs of historically marginalized communities are encouraged, particularly as they align with initiative priority populations and address service gaps.
- Application will be assessed for proposed activity purpose, justification, target population(s), geographic location, and theory of change.

- Funds may be used to develop new program activities or enhance existing efforts.
- Prime grantee may propose to implement 1 CBP in portfolio; must justify alignment with initiative priorities and overall diversity and balance of portfolio.

INITIATIVE PRIORITIES

- **LBTQ Californians:** With specific focus on programs designed for cisgender and transgender LBQ women as well as transmasculine and nonbinary individuals. Applications are encouraged to include a mix of programs that broadly and specifically address target populations of LBQ and transgender individuals.
- **BIPOC LBTQ Californians:** We encourage programs that address specific sub-populations and cultural identities, acknowledging that some population definitions (such as API) are too broad to effectively address shared experiences.
- **LBTQ Youth:** How do you define *youth*?
- **LBTQ Elders:** How do you define *elders*?

INITIATIVE PRIORITIES CONT.

- **Urban areas:** Specifically those with significant LGBTQ populations
- **Rural communities and underserved regions:**
- **Economically vulnerable populations:** Including homeless populations and individuals engaged in survival economies.
- **Legally vulnerable populations:** Including immigrants, undocumented individuals, homeless populations, incarcerated and recently incarcerated populations, youth engaged in and recently transitioned from the foster care system, and queer & trans sex workers.

INITIATIVE BUDGET

Total Initiative Budget	\$17,500,000
State Operations	\$3,000,000
Local Assistance	\$14,500,000
Healthcare Access Demonstration Projects	\$5,850,000
Community Education & Outreach	\$2,700,000
Service Provider Capacity Building	\$2,700,000
LBTQ Research	\$1,800,000
Initiative Evaluation Contractor	\$1,450,000
Evaluation: 20% of total Local Assistance budget. 10% initiative evaluation contractor; 10% earmarks within community-based grants	

GRANTS AND FUNDING LEVELS

Solicitation 1: HCADP and CE&O	# Awarded	Individual Award Amounts
Prime Grantees	4	\$1,912,500
HCADP Sub-grantees	10-12	\$200,000-\$500,000
CE&O Sub-grantees	14	\$50-\$250,000

Each Prime Grant is inclusive of administration and sub-grantee budgets. Each Prime will manage 5-8 Sub-grants.

Solicitation 2: SPCB	# Awarded	Individual Award Amounts
Prime Grantees	4	\$600,000
SPCB Sub-grantees	10	\$100,000-\$250,000

Each Prime Grant is inclusive of administration and sub-grantee budgets. Each Prime will manage 2-4 Sub-grants.

Solicitation 3: Research Grants	# Awarded	Individual Award Amounts
Research Grantees	8	\$50-500,000

EVALUATION

- Scope of work outlined and key deliverables identified
- Three levels of anticipated evaluation:
 - Project
 - Strategy
 - Initiative-wide
- Potential program evaluator candidate identified
- Tentative timeline:
 - Finalizing work plan/evaluation plan by early November
 - Contract executed by December

SOLICITATION SCHEDULE SUMMARY

Solicitation	10/21	11/21	12/21	01/22	02/22	03/22	04/22	05/22	06/22	07/22
Statewide Evaluator and Community Needs Assessment Technical Assistance	●————●									
Population Administrators				●————●				●		
Service Provider Capacity Building					●————●					●
LBTQ Research Grants			●————→							

- Solicitations for Population Administrators and Service Provider Capacity Building Providers will be developed with community input:
 - Draft solicitations will be reviewed with stakeholders and be open for feedback
 - A change request process will be integrated into the solicitation

AGENDA

- 1:00 – 1:15** **Welcome and Housekeeping**
Jason Tescher (He/His)
Chief, Gender Health Equity Unit
Office of Health Equity, Department of Public Health
- 1:15 – 1:30** **Revised Initiative Priorities: What we heard**
Sarah Roush, MSPH, CHES (She/Hers)
Gender Health Equity Specialist
Office of Health Equity, Department of Public Health
- 1:30 – 2:00** **Solicitation Structures: What we are thinkin'**
Sarah Roush, MSPH, CHES (She/Hers)
- Amy Lanteigne, MSPH (She/Hers)*
Gender Health Equity Specialist
Office of Health Equity, Department of Public Health
- 2:00 – 2:05** **Break**
- 2:05 – 2:55** **Did We Get It Right: Facilitated discussion**
Jhilya F. Mayas, PhD (She/Hers)
- 2:55 – 3:00** **Next steps**
Jason Tescher (He/His)

BREAK

PLEASE RETURN AT 2:05

HOUSEKEEPING REMINDERS

- ☑ Use Zoom's raise your hand and chat function if you have a comment or question.
- ☑ Please turn off your mic to eliminate background noise. Please stay muted until you are called on to speak.
- ☑ Say name and organization each time you speak.
- ☑ For technical issues, email Simran Sunak at simran.sunak@achangllc.com and Andrew Chang at Andrew.chang@achangllc.com

AGENDA

- 1:00 – 1:15** **Welcome and Housekeeping**
Jason Tescher (He/His)
Chief, Gender Health Equity Unit
Office of Health Equity, Department of Public Health
- 1:15 – 1:30** **Revised Initiative Priorities: What we heard**
Sarah Roush, MSPH, CHES (She/Hers)
Gender Health Equity Specialist
Office of Health Equity, Department of Public Health
- 1:30 – 2:00** **Solicitation Structures: What we are thinkin'**
Sarah Roush, MSPH, CHES (She/Hers)
- Amy Lanteigne, MSPH (She/Hers)*
Gender Health Equity Specialist
Office of Health Equity, Department of Public Health
- 2:00 – 2:05** **Break**
- 2:05 – 2:55** **Did We Get It Right: Facilitated discussion**
Jhilya F. Mayas, PhD (She/Hers)
- 2:55 – 3:00** **Next steps**
Jason Tescher (He/His)

General Impressions

FACILITATED DISCUSSION

AGENDA

- 1:00 – 1:15** **Welcome and Housekeeping**
Jason Tescher (He/His)
Chief, Gender Health Equity Unit
Office of Health Equity, Department of Public Health
- 1:15 – 1:30** **Revised Initiative Priorities: What we heard**
Sarah Roush, MSPH, CHES (She/Hers)
Gender Health Equity Specialist
Office of Health Equity, Department of Public Health
- 1:30 – 2:00** **Solicitation Structures: What we are thinkin'**
Sarah Roush, MSPH, CHES (She/Hers)
- Amy Lanteigne, MSPH (She/Hers)*
Gender Health Equity Specialist
Office of Health Equity, Department of Public Health
- 2:00 – 2:05** **Break**
- 2:05 – 2:55** **Did We Get It Right: Facilitated Discussion**
Jhilya F. Mayas, PhD (She/Hers)
- 2:55 – 3:00** **Next Steps**
Jason Tescher (He/His)

NEXT STEPS

- Completing RFI process & informational discussions with Foundations
- Written feedback and office hours
 - We welcome feedback!
 - Please submit written feedback to LBTQInitiative@cdph.ca.gov on November 5, 2021 by COB
 - GHEU to hold structured “Office Hours” to receive community feedback on November 3rd from 4-6pm and November 5th from 11am-1pm. More information to come.
- Execute Initiative Evaluator contract by December
- Develop HCADP/CE&P: \$9.5M (Solicitation 1) and release Q4

Contact Information

Jason Tescher (He/His)

Chief, Gender Health Equity Unit
Office of Health Equity
California Department of Public Health
Email: Jason.Tescher@cdph.ca.gov
Phone: 916-612-0140

Sarah Roush, MSPH, CHES (She/Hers)

Gender Health Equity Specialist
Office of Health Equity
California Department of Public Health
Email: Sarah.Roush@cdph.ca.gov

Amy Lanteigne, MSPH (She/Hers)

Gender Health Equity Specialist
Office of Health Equity
California Department of Public Health
Email: Amy.Lanteigne@cdph.ca.gov

THANK YOU FOR ATTENDING